

## Product Structure Diagram



## A3000BM Pairing Method

- Download a Serial assistant on the Tablet or phone.
- Open Bluetooth on device and the Serial assistant.
- Press the first button open the scanner(flashing blue light).
- Select the bluetooth scanner(SCAN) by Serial assistant.
- Pairing "SCAN" with device, put password "0000" or "1234".
- Pairing successfully(Blue light on).

## Product Introduction

### Portable Industry Bluetooth Barcode Scanner



Light source	Visible laser diode, wavelength 670nm
Scan mode	Single-line scan
Scan speed	200 scans/sec
Scan Accuracy	0.1mm(PCS 0.9)
Zymology	EAN-8,EAN-13,UPC-A,UPC-E,Code 39,Code 93,Code 128,EAN128,Codaber,Industoa l 2 of 5,Interleave 2 of 5,Matrix 2 of 5,MSI,China P.C.
Print Contrast Sig nal	30% reflect difference on lowest 30%
BER	1/five million
Scan mode	Manual, Lighting

A3000-BM

## A3000-BM



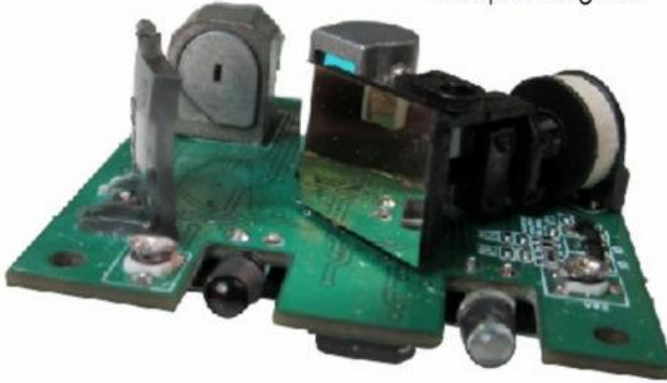
Button  
Function

Operating Instruction

## Related Product

### ❖ YQ2000

Dimensions	42x43x17mm
Working Current	42mA @ 5V
Infrared Sensor	Auto trigger
Output Signal	TTL

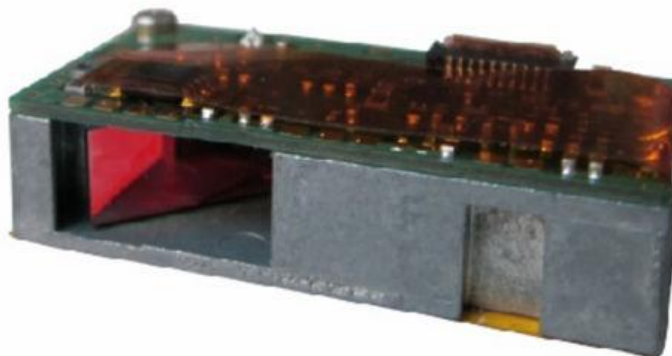


A3000-BM

## Related Product

### ❖ YJ6000

Dimensions	28x14x8mm
Power consumption	42mA @ 3.3V
Output Signal	TTL



A3000-BM

## Product Details

Outline	
Size	116mmL×51mmW×24mmH
Weight	100g
Material	ABS+PC
Cable	1.5m
Electrical Parameter	
Voltage	5V
Operating Current	85mA
Static Current	36mA
Safety of laser	national laser safety standards class 2
EMC	CE & FCC DOC compliance
Environment	
Operation Temperature	0°C-45°C
Storage Temperature	-20°C-60°C
Humidity	5%-95%(non-condensing)
Ambient Light	Max.5,000 Lux(FL)
Shok	Endure the impact of 2.5M Height

A3000-BM

## Application Field



A3000-BM